



Kitchen/ Living/ Dining

Apartment
€ 270,000

SOLD FINISHED
Excluding internal doors.

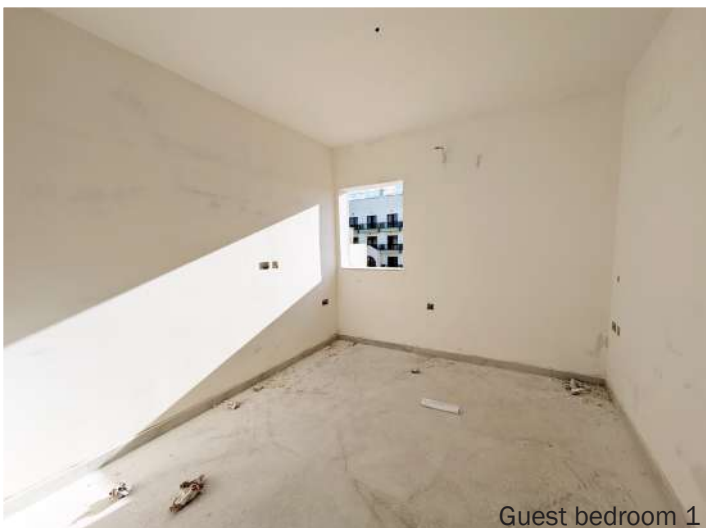
ST. PAUL'S BAY APARTMENT

- 6th floor apartment
- Three double bedrooms (main with en-suite)
- Larger than usual open-plan kitchen/ living/ dining
- Guest bathroom
- Front balcony
- There is an annual perpetual ground rent of € 15.53



Kitchen/ Living/ Dining

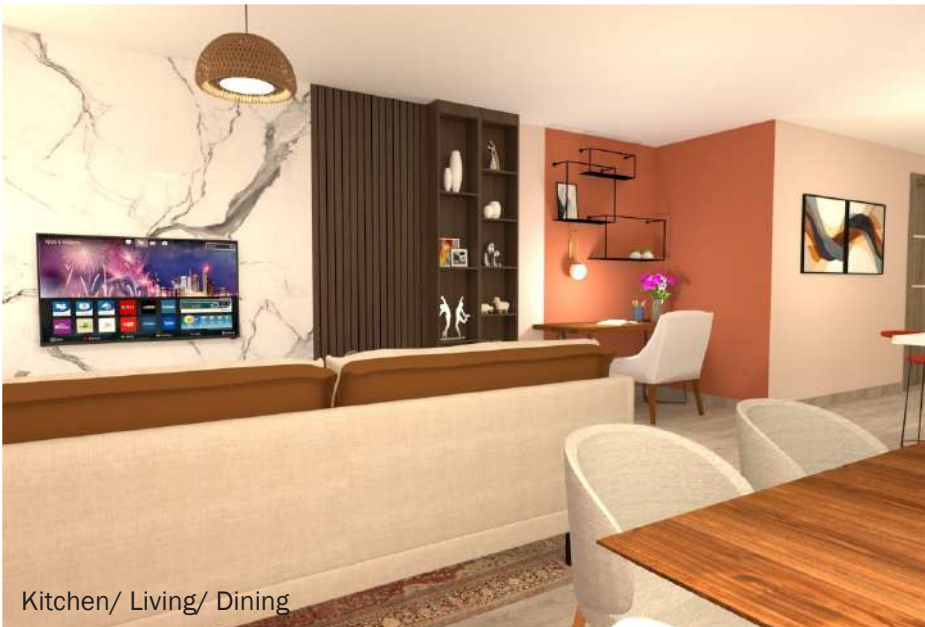
Situated in the heart of St. Paul's Bay, with everything you need just 3 minutes walk away!



Guest bedroom 1



Guest bedroom 2




Kitchen/ Living/ Dining

Bedrooms: 3
 Bathrooms: 2
 K/L/D: 1
 Balcony: 1

Internal area: 111.5 sqm
 External area: 2.5 sqm

Total area: 114 sqm



- Situated in a quiet street,  yet close to the centre.
- 5 minute walk to the seaside.
- Within 3 minutes' walk to a range of daily amenities.
- 5 minute drive away from the St. Paul's Bay Primary School.
- 5 minute drive away from lidl supermarket.
- 16 minute walk to the Salina National Park.



Main bedroom



Guest bathroom



Kitchen/ Living/ Dining

3D images shown for illustration purposes