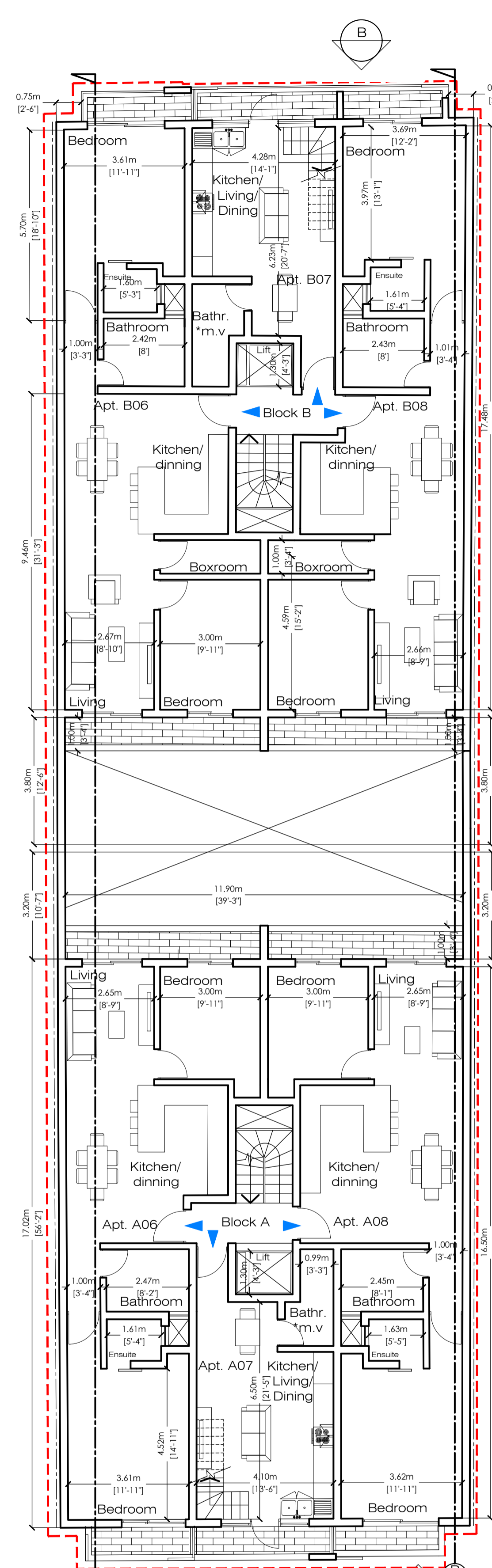


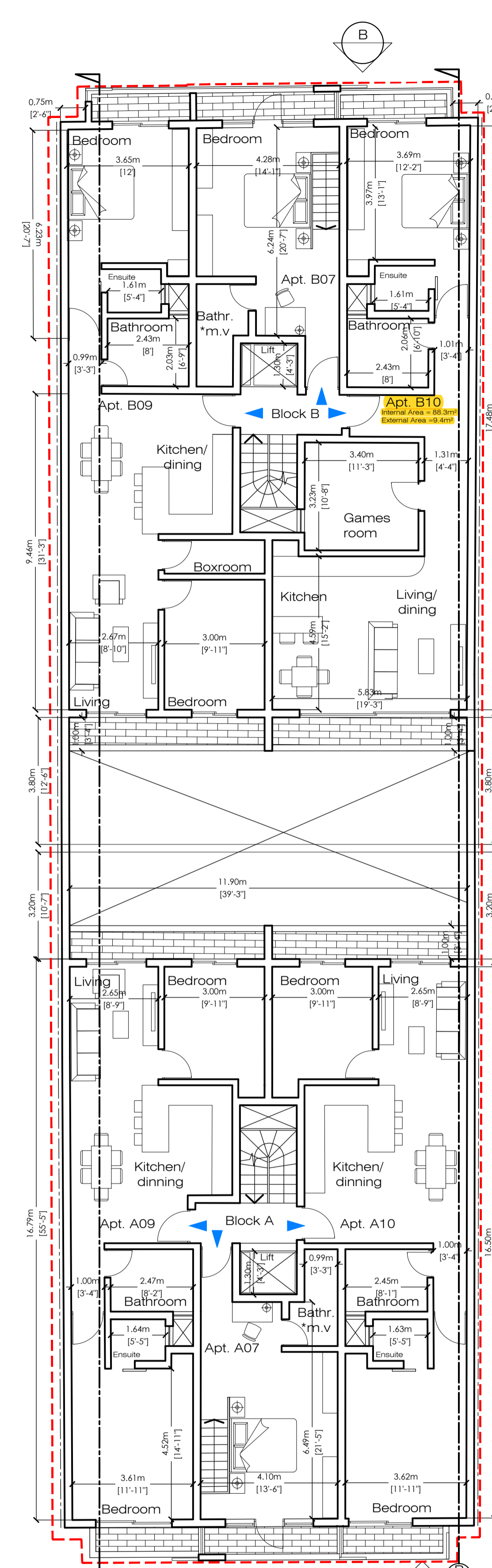
Second Floor Plan Proposed Scale 1:100

unit ref.	internal area (m ²)	front balcony / terrace (m ²)	rear balcony / terrace (m ²)	total (m ²)
Apt. B04	89.7	3.2	6.3	99.2
Apt. B05	88.3	3.2	6.2	97.7
Apt. A04	80.9	3.2	6.1	90.2
Apt. A05	82.6	3.2	6.4	92.2



Third Floor Plan Proposed Scale 1:100

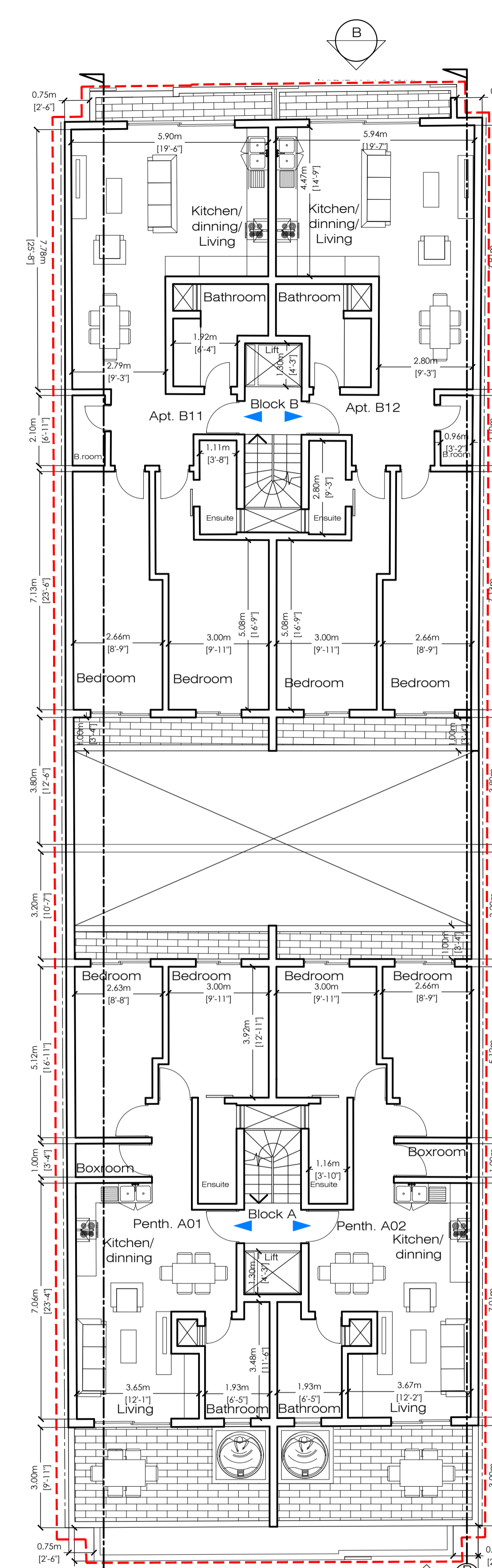
unit ref.	internal area (m ²)	front balcony / terrace (m ²)	rear balcony / terrace (m ²)	total (m ²)
Apt. B06	89.7	3.2	6.3	99.2
Apt. B07	67	9	N/A	76
Apt. B08	88.3	3.2	6.2	97.7
Apt. A06	80.9	3.2	6.1	90.2
Apt. A07	67	8.6	N/A	75.6
Apt. A08	82.6	3.2	6.4	92.2



Fourth Floor Plan Proposed Scale 1:100

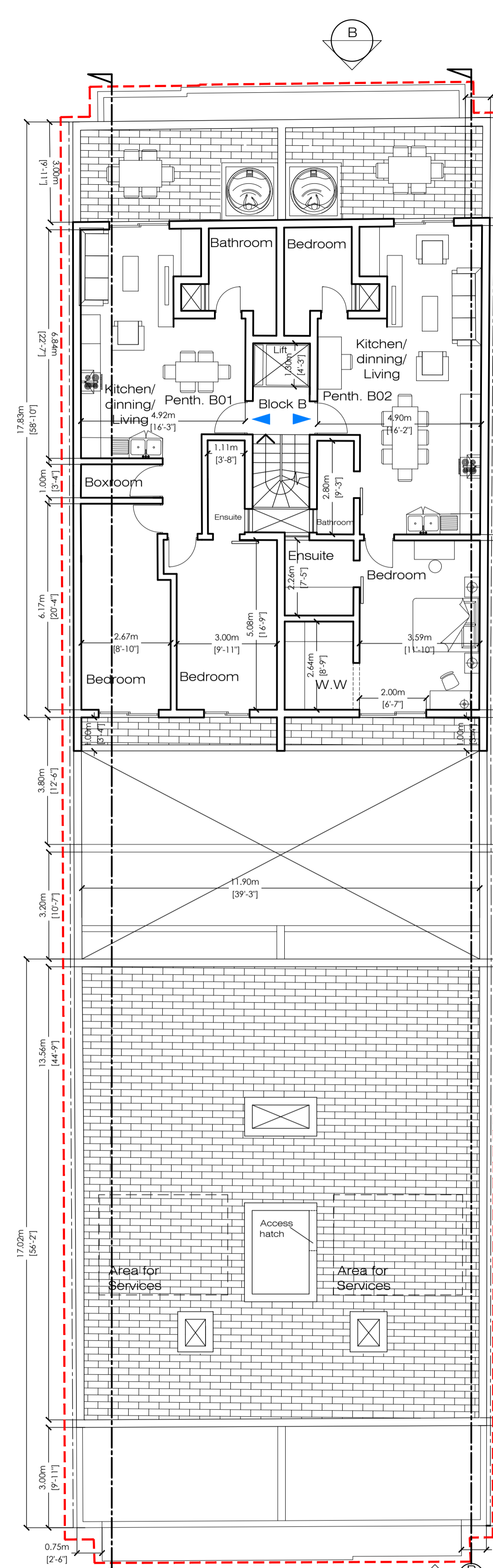
unit ref.	internal area (m ²)	front balcony / terrace (m ²)	rear balcony / terrace (m ²)	total (m ²)
Apt. B09	89.7	3.2	6.3	99.2
Apt. B10	88.3	3.2	6.2	97.7
Apt. A09	80.9	3.2	6.1	90.2
Apt. A10	82.6	3.2	6.3	92.1

Apt. B10 - Qualifies as a two bedroom dwelling in view of floor space exceeding 90 m² limit



Fifth Floor Plan Proposed Scale 1:100

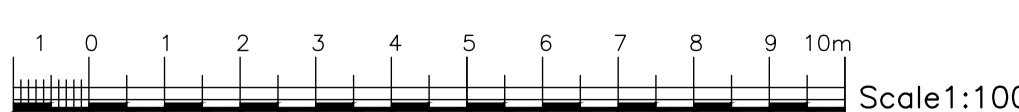
unit ref.	internal area (m ²)	front balcony / terrace (m ²)	rear balcony / terrace (m ²)	total (m ²)
Apt. B11	106.4	5.5	6.3	118.2
Apt. B12	107	5.5	6.2	118.7
Pent. A01	80.6	18.7	6.1	105.4
Pent. A02	80.9	18.8	6.3	106



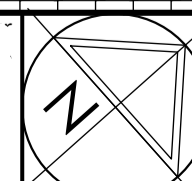
Sixth Floor Plan Proposed Scale 1:100

unit ref.	internal area (m ²)	front balcony / terrace (m ²)	rear balcony / terrace (m ²)	total (m ²)
Pent. B01	87.4	18.8	6.3	112.5
Pent. B02	87.7	19.1	6.2	113

*m.v. = mechanically ventilated



Scale 1:100



- GREEN AS APPROVED BUT NOT CONSTRUCTED
- BLUE AS CONSTRUCTED BUT NOT APPROVED
- RED TO BE ERECTED
- YELLOW TO BE REMOVED

REVISION & DATE	REMARKS
J. 24-03-2021	New numbering/lettering of the apartments as requested by clients Reply to Planning Authority R Pt Dec. 1003 of 01/02/21
K. 10-06-2021	Minor amendments to the design of the elevations
L. 29-09-2021	Minor amendments to the area of apartment B10 and the uses of Penthouse B02